

NEX-TECH WI-FI MANAGER APP // INSTALLATION GUIDE



IT'S SO EASY!

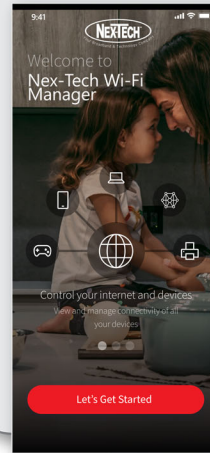
1

Download the **Nex-Tech Wi-Fi Manager** app from the App Store or Google Play.



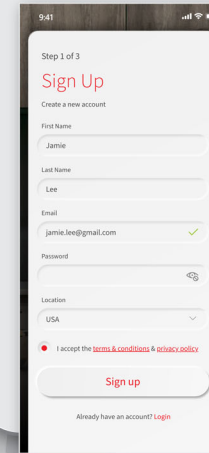
2

Select **Let's Get Started**



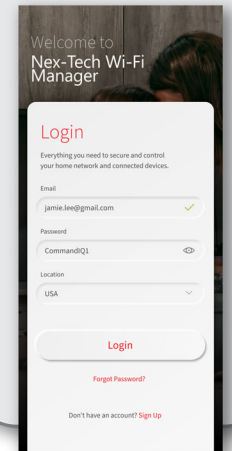
3

Select **Sign Up** and follow the on-screen directions.



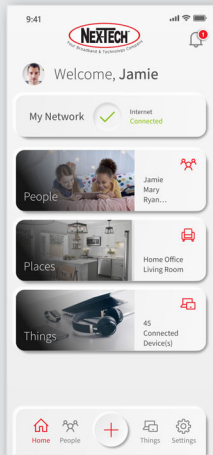
4

Log in to your app.



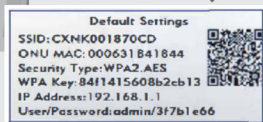
5

On-board your router by selecting **OK**.

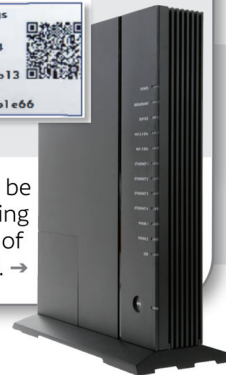


6

Follow the on-screen prompts and scan the **QR Code** on the router. If you have trouble, select **ISSUES SCANNING** and manually enter router information.



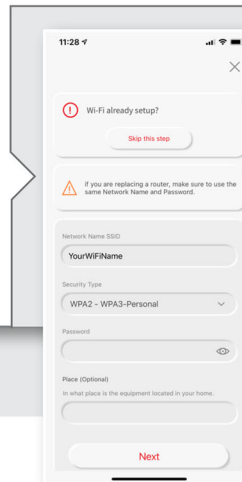
QR code may be found by sliding off the base of the router. →



7

Create a Wi-Fi name and strong password that includes upper and lowercase letters, numbers and/or special characters.

Choose your Security Type: **WPA 2 – WPA 3-Personal** is recommended. If Wi-Fi is already set up, select **Skip This Step**.



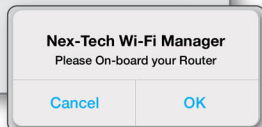
8

YOU'RE DONE!

Start enjoying your new Internet service and the ability to manage it with the **Nex-Tech Wi-Fi Manager** app!

Getting Started with the App

Nex-Tech Wi-Fi Manager allows you to manage your home or small business Wi-Fi network. Create a guest network for visitors without sharing your personal password, view and turn off Wi-Fi for connected devices, perform speed tests and ensure Wi-Fi quality are some of the useful features within the app.



Need help? Contact the Help Desk at **877.625.7872**
Looking for more information? View helpful videos at [NEX-TECH.COM/WIFIMANAGER](https://www.nex-tech.com/wifimanager)

